

Customer requirements

8.2.1-12E LINE BUSHINGS

Customer

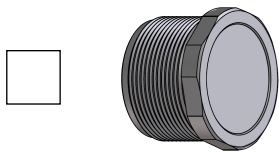
Company _____
 Street _____
 ZIP _____
 Country _____
 Contact Person _____
 E-mail _____
 Phone number _____

QUINTEX

Offer _____
 Order _____
 Project _____
 Date of Offer _____
 Date of delivery _____
 Quantity _____
 Date _____

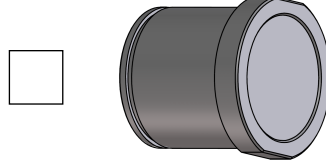
Type of Application

Threaded bushing



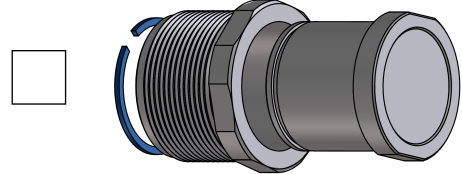
Threaded size _____
 bis maximal M72x1,5mm

Pluggable bushing



Plug Ø _____
 bis maximal Ø 80mm

2-Path (Threaded adapter + pluggable bushing)



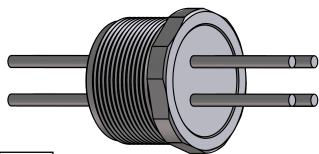
Adapter/Plug _____

Thread/Plug length (without flange)
 Specifying in mm _____

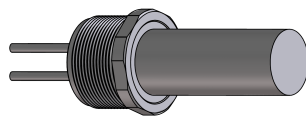
For pluggable bushings enclosure volume needed
 Specifying in cm³ _____

Note: Threads like NPT; Withworth pipe thread or special thread as well as special versions of the plugs on request

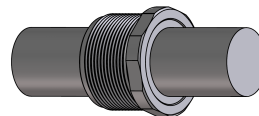
Cable selection



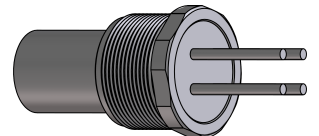
Wire / Wire



Wire / Cable



Cable / Cable



Cable / Wire

Cable description

Wire/Cable1

Wire/Cable 2

Wire/Cable length

Wire quantity
 max. 55 wires _____

Wire quantity
 max. 55 wires _____

Cross section
 in mm² _____

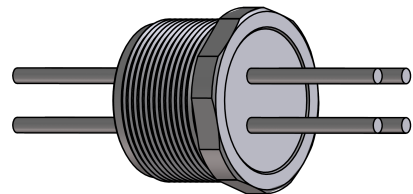
Cross section
 in mm² _____

Wire /
 Cable material _____

Wire /
 Cable material _____

Threaded side
 in mm _____

Flange side
 in mm _____



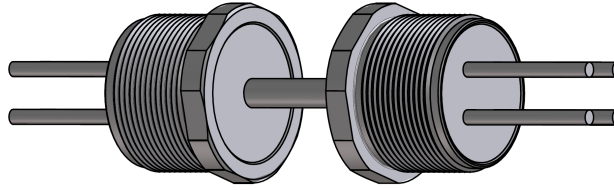
Ambient temperature
 -55°C ... +115°C _____

Note: Fiber optic cables, data lines or other special cables on request

Dimension of Special bushings

Design: Double sleeve with flexible cable

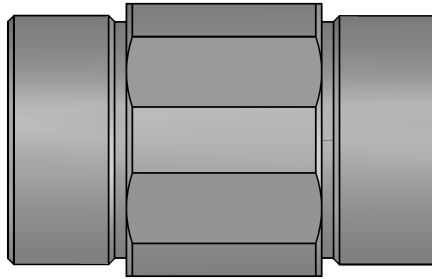
This consists of the same or different bushing types which are connected to one or more cables. This connection is suitable for connecting two Exd housings, for example.



Side 1				Side 2
Threaded size	_____		Threaded size	_____
Plug Ø	_____	Length between Bushing in mm	Plug Ø	_____
Adapter/Plug	_____		Adapter/Plug	_____

Design: Double sleeve

This consists of the same or different bushing types. This connection is suitable for connecting two Exd housings, for example.



Side 1				Side 2
Threaded size	_____		Threaded size	_____
Plug Ø	_____	Length between Bushing in mm	Plug Ø	_____
Adapter/Plug	_____		Adapter/Plug	_____

Approvals

Indication of the necessary approval

ATEX IECEX EAC FM CSA UL

Assembling

Linebushings with fibre optics and/or data lines often require assembly with a wide variety of contacts. The same applies to wires that are tinned or fitted with vein end sleeves.

For Assembling, please contact us directly: linebushings@quintex.info

Online Calculation

Linebushings with standard bushings and standard cables can be calculated online:

https://www.quintex.eu/ld_kalk.html